

8

7

6

5

4

3

2

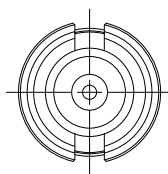
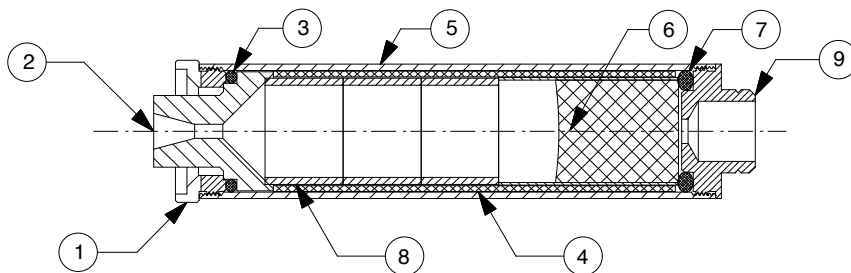
1

### REVISIONS

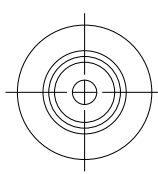
EFFECTIVITY	REV	DESCRIPTION	DATE	APPROVED
FUTURE	A	FIRST RELEASE ISSUE	6 / 5 / 13	

#### NOTES:

1. MOTOR ASSEMBLY SHOWN WITH SPECIFIED MOTOR HARDWARE & RELOAD KIT.
2. APPLY GREASE ON FORWARD END OF PROPELLANT GRAIN.
3. FILL EJECTION WELL OF FORWARD CLOSURE WITH JB WELD EPOXY.




VIEW AFT CLOSURE



VIEW FORWARD CLOSURE

1	910043E	FORWARD CLOSURE	9
3	03060	GRAIN SPACER, .553" X .406" ORANGE	8
1	00111	FORWARD O-RING (5/8" O.D. X 3/32") 111	7
1	03480	PROPELLANT GRAIN (.562" O.D. X .937")	6
1	910041B	CASE	5
1	02000	LINER (.629" O.D. X 2.093")	4
1	00014	AFT O-RING (5/8" O.D. X 1/16") 014	3
1	01000-4	NOZZLE (D8) DRILLED .073"	2
1	910042D	AFT CLOSURE	1

QTY	PART NUMBER	DESCRIPTION	ITEM
LIST OF MATERIAL			
CONTRACT NUMBER		 2113 W. 850 N. Street Cedar City, Utah 84721 (435) 865-7100 (Ph) (435) 865-7120 (Fax)	
PREP	G. ROSENFELD		
CHKR			
MATERIAL		<b>RMS-18/20 MOTOR WITH C3.4-PT RELOAD KIT</b>	
NOTED			
FINISH		SIZE	NUMBER
		<b>A</b>	<b>ASSY DWG</b>
		SCALE	1 / 1
		SHEET 1 OF 1	

#### SUPPLIER DATA

AEROTECH DIV RCS RMC INC.

#### RELOAD KIT IDENTIFICATION

30300

C3.4-PT

UNLESS OTHERWISE SPECIFIED DIMENSIONS ARE IN INCHES

.XX +/- .010	.XXX +/- .005	ANGLES +/- 2 deg.
-----------------	------------------	----------------------

MATERIAL

NOTED

FINISH

PART NUMBER

DESCRIPTION

8

7

6

5

4

3

2

1