

8

7

6

5

4

3

2

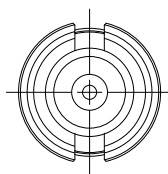
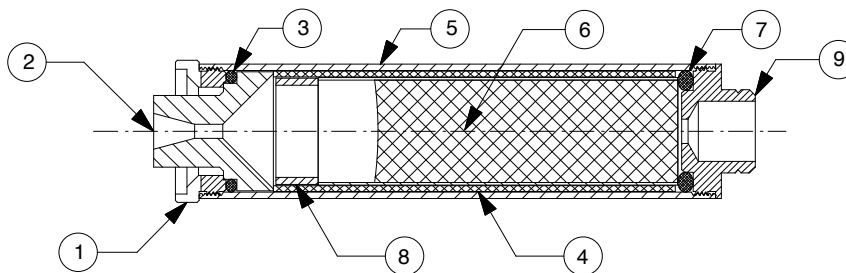
1

REVISIONS

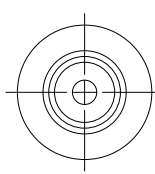
EFFECTIVITY	REV	DESCRIPTION	DATE	APPROVED
FUTURE	A	FIRST RELEASE ISSUE	6 / 5 / 13	

NOTES:

1. MOTOR ASSEMBLY SHOWN WITH SPECIFIED MOTOR HARDWARE & RELOAD KIT.
2. APPLY GREASE ON FORWARD END OF PROPELLANT GRAIN.
3. FILL EJECTION WELL OF FORWARD CLOSURE WITH JB WELD EPOXY.




VIEW AFT CLOSURE



VIEW FORWARD CLOSURE

1	910043E	FORWARD CLOSURE	9
1	03054	GRAIN SPACER, .553" X .219" BLUE	8
1	00111	FORWARD O-RING (5/8" O.D. X 3/32") 111	7
1	03482	PROPELLANT GRAIN (.562" O.D. X 1.875")	6
1	910041B	CASE	5
1	02000	LINER (.629" O.D. X 2.093")	4
1	00014	AFT O-RING (5/8" O.D. X 1/16") 014	3
1	01000-4	NOZZLE (D8) DRILLED .073"	2
1	910042D	AFT CLOSURE	1

QTY	PART NUMBER	DESCRIPTION	ITEM
LIST OF MATERIAL			
CONTRACT NUMBER		 2113 W. 850 N. Street Cedar City, Utah 84721 (435) 865-7100 (Ph) (435) 865-7120 (Fax)	
PREP	G. ROSENFELD		
CHKR			
APVD		SIZE	NUMBER
APVD		A	ASSY DWG
		SCALE	1 / 1
		SHEET 1 OF 1	

SUPPLIER DATA

AEROTECH DIV RCS RMC INC.

RELOAD KIT IDENTIFICATION

40200

D2.3-PT

UNLESS OTHERWISE SPECIFIED DIMENSIONS ARE IN INCHES

.XX	.XXX	ANGLES
+/- .010	+/- .005	+/- 2 deg.

MATERIAL

NOTED

FINISH

PART NUMBER

DESCRIPTION

8

7

6

5

4

3

2

1